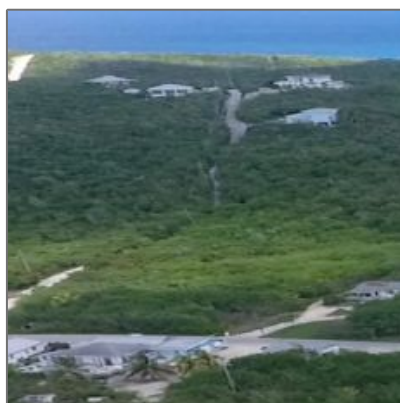
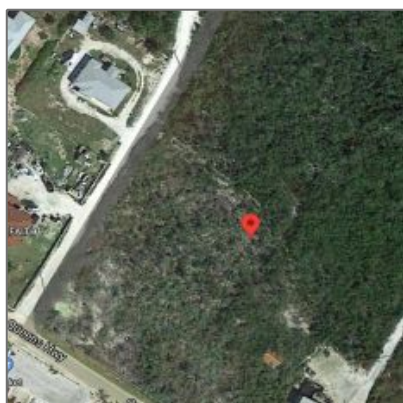


# Lots/acreage

1,089,000 Sqft - PETTY'S, LONG ISLAND



## Basic [Details](#)

Island: **Long Island**

Property Type: **Lots/acreage**

Listing Type: **For Sale**

MLS or Listing Number: **46276**

Price: **\$2,300,000**

Square Footage: **1,089,000 Sqft**

Lot Size: **1,089,000 Sqft**

Area: **681**

## Address [Map](#)

Street: **PETTY'S, LONG ISLAND**

Longitude: **W76° 56' 25.8"**

Latitude: **N23° 7' 40.9"**

## Agent [Info](#)

## Features

Roof: **Other**

Assessment Includes (Condo): **No Fee**

Parking Type: **Open**

## MLS [Addon](#)

Foundation: **No**

Lot: **0**



Lana Munnings-Basalyga  
✉ [лана@bahamaschoice.com](mailto:лана@bahamaschoice.com)

- *Bahamas Choice Real Estate, Ltd P. O. Box N-4484 Nassau, Bahamas*

---

**All Rights Reserved**